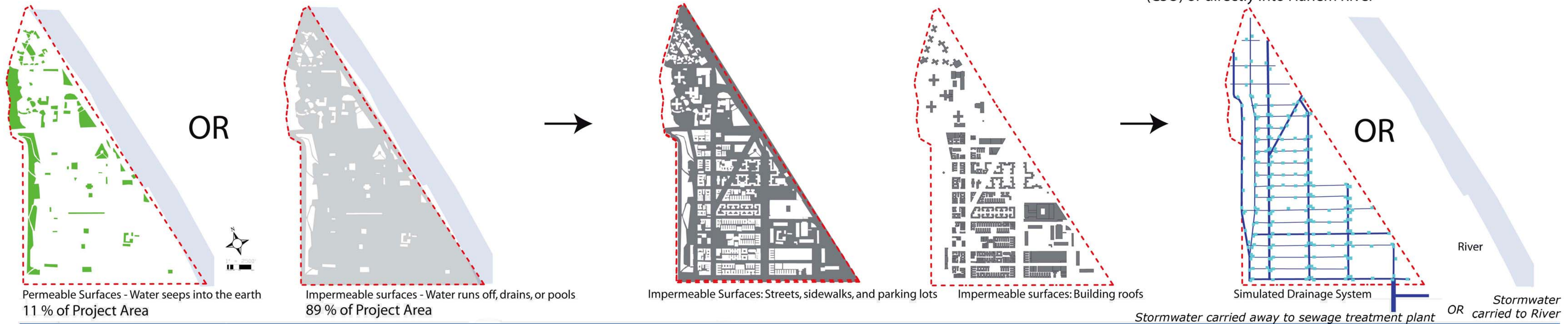


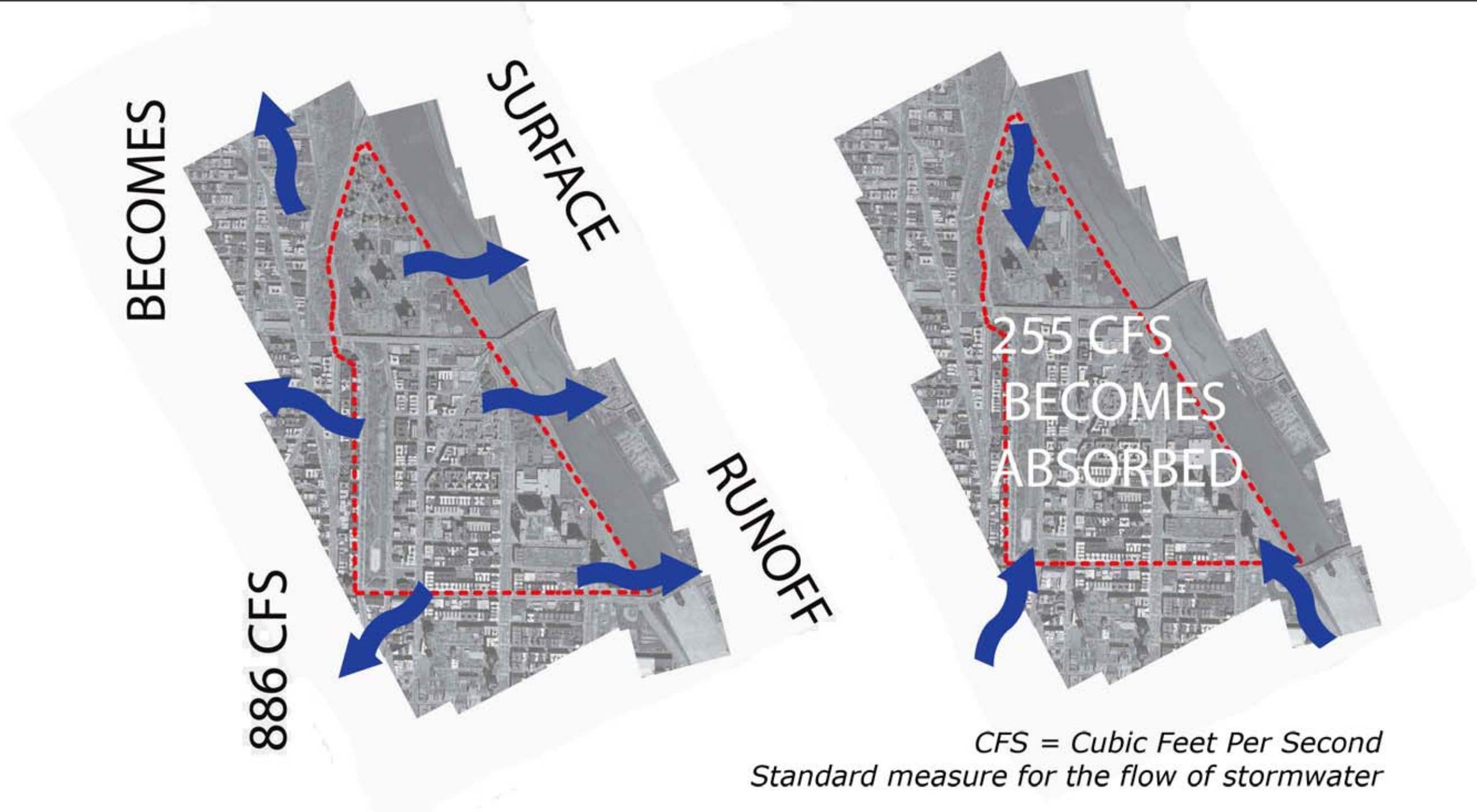
Falls on permeable or impermeable surfaces

Impermeable surfaces comprised mainly of streets and roofs

Which drain into combined sewer overflow system (CSO) or directly into Harlem River

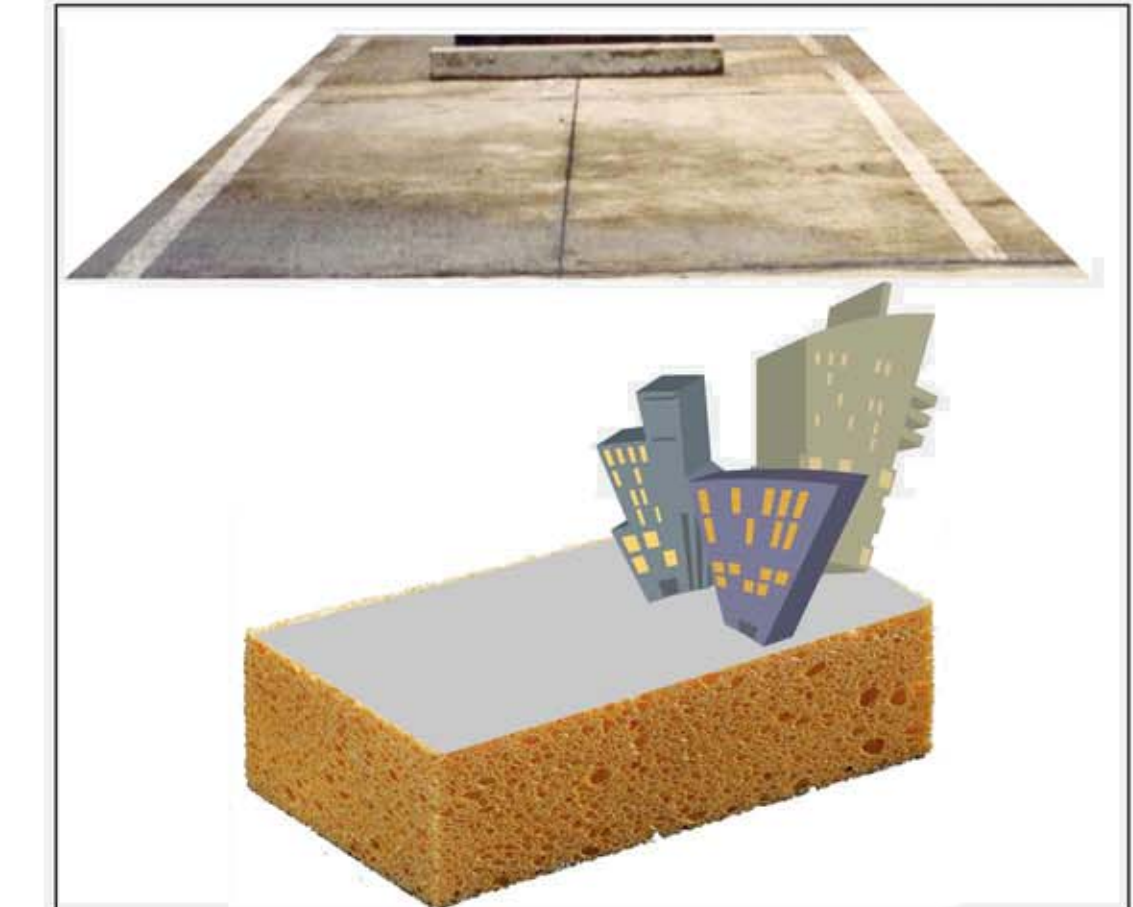


**NOWHERE FOR STORMWATER TO GO; MAINLY DRAINS TO PLACES OFF-SITE**

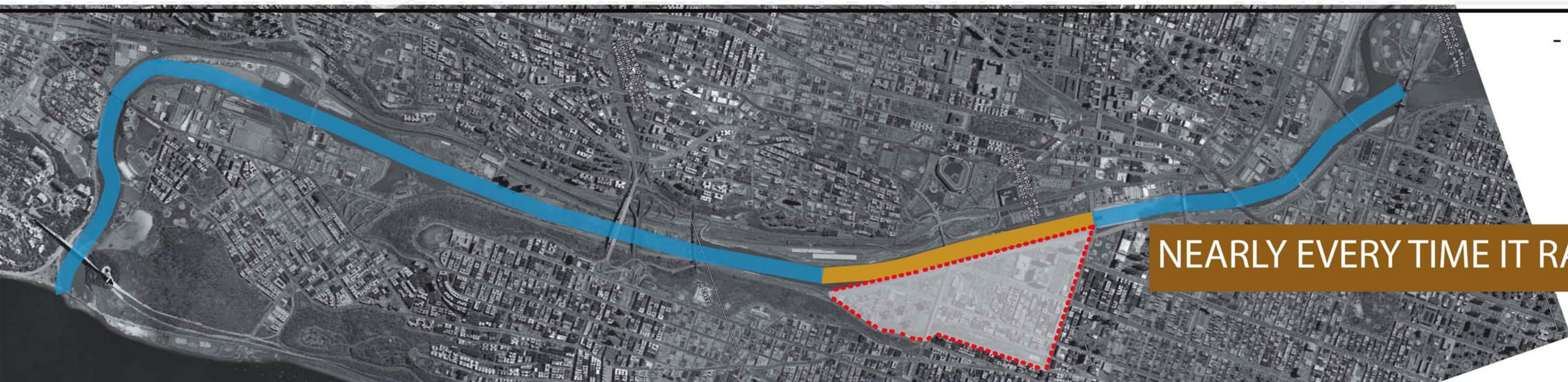


22 ACRES OF PERMEABLE AREA TO 105 CFS ABSORBED OR EVAPORATED ABOUT 1:4

170 ACRES OF IMPERMEABLE AREA TO 150 CFS ABSORBED OR EVAPORATED ABOUT 1:1



**PERMEABLE SPACES WORK HARDER**



**NEARLY EVERY TIME IT RAINS SEWAGE OVERFLOWS INTO THE HARLEM RIVER**

- 1/10 of an inch of rain can overload the combined sewer overflow system (according to Riverkeeper)
  - NYC annual rainfall = 45 inches on average, about 10 precipitation days in a month (according to NOAA climate data)
- Thus, average rain falling in one storm about 4/10 of an inch

**THE BRADHURST COMMUNITY REVITALIZATION PROJECT**

The City College of New York School of Architecture, Urban Design and Landscape Architecture, Department of Landscape Architecture  
Professor Benzinberg Stein Bayley Castro Drobny Fouskaris Hart Hayes Jiang Ochoa Payton Rudnick Vaska

**HYDROLOGY**

25 September 2008